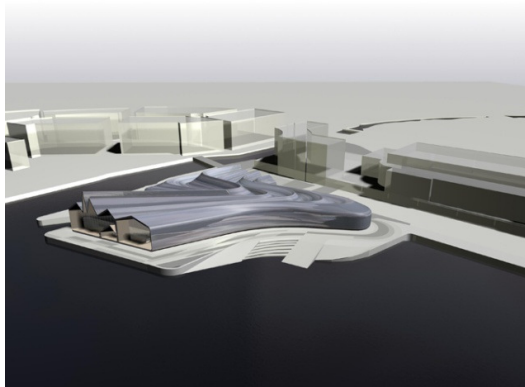


Riverside Museum is a new £74.0m development of the Clyde Waterfront in the Greater Govan and Glasgow Harbour area of Glasgow, Scotland. The building is a world first in terms of ceiling profile design, which has been envisioned by Zaha Hadid Architects and is being made a reality by SKANSKA Clark & Fenn and BAM. The design of the ceiling profile represents the flow of the River Clyde, which it is situated beside. As such the cross section through the profile is extremely complex requiring use of a vast array of techniques that are both pioneering and expeditious.

SKANSKA Clark & Fenn were appointed as the sub Contractor for the installation of the ceiling. To achieve such an ambitious building they had to work closely with the Architect, Structural Engineer and main Contractor as well as other third parties and suppliers to ensure that the package was delivered on time and to the highest quality possible.

Since the primary structural frame was erected, Evolution Fasteners (U.K.) Ltd have been on site providing advanced fixings solutions in conjunction with our distribution agent, Craighead Building Supplies. On site there were numerous technical problems, especially when trying to self drill and self tap hanging joists to extra heavy primary structural steel sections. As such Evolutions Technical Department Engineers were on site providing technical information and fixing solutions to ensure that this world class project was completed on time and economically.



### Case Study: Riverside Museum, Glasgow

Main Contractor



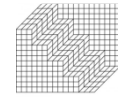
Ceiling Contractor



Architect



Structural Engineer

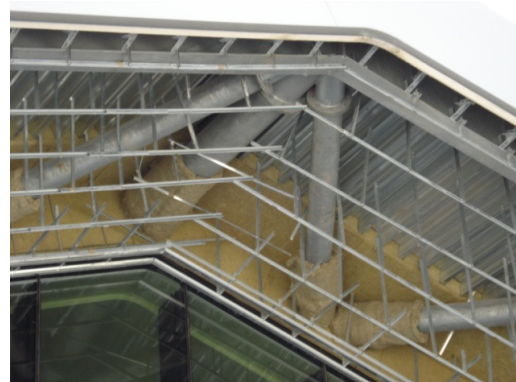


Contract Value  
Timeline

£74.0 million  
2007 to 2011

Many Evolution products have been specified and used on site. There were numerous challenges that had to be overcome. Those solved using Evolution fasteners are:

- 1. **Fixing joist hangers to extra heavy primary structural steel sections.**



**Challenge:** Original fastener specification was for another manufacturer's part. The specified parts however were burning out when drilling the structural steel.

**Solution:** Evolution Engineers visited the site and demonstrated our unique SuperTek 8 part, which easily self drilled the extra thick primary steel frame.

**Evolution Part:** TSHW6.3-60-8



**2. Fixing ceiling hangers and trays to primary and secondary structural steel.**



**Challenge:** Unique positioning and forms required a reliable, easy and safe fixing solution.

**Solution:** After success with replacing the previous specified manufacturers' parts with Evolution fasteners, became the favoured supplier. Further demonstrations and advice provided by Evolution Engineers proved that our TSBW5.5-38-5 tek screws for heavy steel could be used in a safe manner. Evolution products are well renowned for their superior quality.

**Evolution Part:** TSBW5.5-38-5



**3. Fixing soffit board to secondary and tertiary steel framing.**



**Challenge:** A simple, reliable, safe and cost effective fixing solution is required.

**Solution:** After consideration, it was decided that Evolution self drilling drywall screws would be a economical yet safe and reliable fixing solution. Evolution Fasteners' drywall range is known for its' high quality. Corrosion was not an issue on the soffit boards as it was guaranteed that there would be no moisture ingress into the soffit.

**Evolution Part:** Evolution DWSDZ42





www.evolutionfasteners.co.uk

To date, Evolution Fasteners have provided our products including our unique SuperTek range which features a spiral cutting point instead of the traditional scraper point. This new spiral point is the result of years of research and development with the very latest in brazing and heat treatment technology being used in its manufacture. Once brazed together, the spiral point is then hand honed to form some of the sharpest and most reliable cutting points on the market. There is no other screw that can cut the same thicknesses of steel. Our SuperTek fasteners offer unrivalled performance and go above and beyond the traditional upper limit of 12.5mm of steel to a massive 25.4mm of steel.

Reflecting on the Evolution SuperTek 8 part used, Mr. Iain Chalmers (Regional Manager, SKANSKA Clark & Fenn) said:

*“The solution offered by these fasteners resolved a very difficult problem and their ability to fix steel was commendable, and more importantly it worked every time.”*

Evolution Fasteners has also provided numerous other threaded products to the site including other tek screws, drywall screws, SDS plus drills and other sundries in addition to the products mentioned above.

Evolution Fasteners also provided full Technical Support free to any Contractor, Architect, Engineer or end user using our products. This includes an array of services from site visits to site testing to calculations and AutoCAD drawings. Commenting on the Engineers from Evolution Fasteners Technical Department, Mr. Chalmers stated:

*“The service offered by Evolution has been extremely proactive and greatly assisted us in achieving a fast and reliable solution. They displayed a very knowledgeable and professional approach to all our fixing problems”*



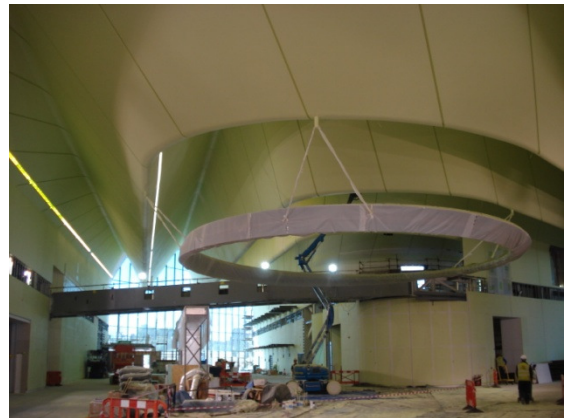
www.evolutionfasteners.co.uk

SKANSKA

## Case Study: Riverside Museum, Glasgow

Evolution Fasteners are proud to have shared our expertise with SKANSKA Clark & Fenn and have supplied our high quality products to one of the most prestigious projects in the United Kingdom. Remarking on the project overall, Ryan Murphy (Technical Manager for Evolution Fasteners) said:

*“It’s incredible what SKANSKA and the other members of the project delivery team have done. It’s a testament to their abilities and the strength of their teamwork.”*



Evolution Fasteners would like to thank all partners involved in the Riverside Museum project. We are delighted to have been favoured supplier on such a prestigious project in our home town, Glasgow.



www.evolutionfasteners.co.uk

SKANSKA



CRAIGHEAD  
BUILDING  
SUPPLIES



CRAIGHEAD  
BUILDING  
SUPPLIES