

## GROWTH THROUGH INNOVATION

Innovation is more than just new products – it's about new ways of thinking. Our R&D team is tackling tomorrow's challenges today, working with universities and industry leaders to create cutting-edge fastening solutions. In our Glasgow lab, curiosity drives progress.

## RIGOROUS QUALITY ASSURANCE

Quality isn't simply checked – it's engineered. With a growing team and advanced facilities, we ensure every product meets the highest standards. We're also expanding into third-party testing, setting new benchmarks for the industry.

## EXPERT ENGINEERING SUPPORT

We don't just supply products – we provide solutions. Our engineers work closely with customers to solve complex fastening challenges, delivering results that improve project outcomes and build long-term relationships.

## AUTHORITATIVE SPECIFICATIONS

Clear specifications lead to confident choices. We simplify technical requirements, helping customers select and apply the right products safely and accurately. Our documents will set the standard across the industry.

## TRANSFORMATIVE TRAINING

Knowledge is powerful. Our new training centre helps professionals at every level to deepen their technical understanding – improving skills, safety, and confidence throughout the industry.



**evolution**  
LABORATORY

## CONTACT US

+44 (0)141 647 7100

technical@evofas.com

www.evofas.com

BUILDING  
**GREAT**  
ENGINEERING  
SERVICES

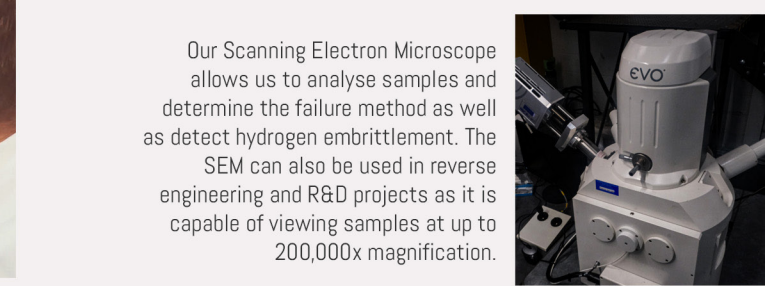
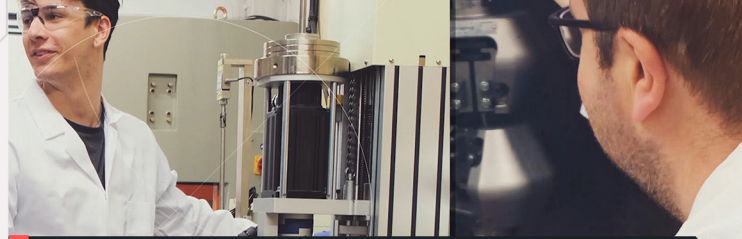


Your Trusted Partner for  
fastener solutions.

www.evofas.com

**evolution**





## TESTING SERVICES:

Provide testing services to clients in the following industries:

- Aerospace
- Law Enforcement
- Construction
- Waste Management
- Engineering
- Infrastructure
- Research & Development
- Automotive
- Pharmaceutical
- Manufacture
- Medical
- Military
- Petrochemical



## BUSINESS/COMMERCIAL SERVICES:

Batch testing services, ensuring your products and systems maintain conformance to your own standards, European Standards and International Standards such as ISO 9001.

Implementation of Quality Control or Quality Management Systems including all consultancy, documentation and auditing requirements.

Auditing by IRCA trained auditors.

Research, development and design packages, undertaking your R&D to give you cost savings on capital investments and personnel resources utilising our expert Engineering and Science staff backed up with research grade equipment.

## REGULATORY/COMMERCIAL SERVICES:

Dispute resolution and fault determination including failure analysis. Trading Standards conformity testing.

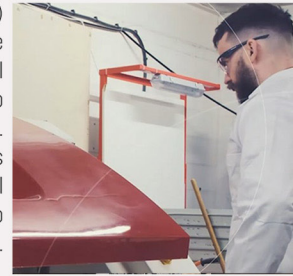
## LABORATORY BASED TESTING (INCLUDING BUT NOT LIMITED TO)

- Tension up to 250kN
- Compression up to 250kN
- Shear up to 250kN
- Flexural, deflection and bending strength up to 250kN
- Withdrawal force resistance
- Pull-through force resistance
- Tensile yield strength
- Modulus (Plastic, elastic and Young's)
- Bonding Strength
- Drilling Speed and drilling time
- Torque testing up to 23 Nm
- Hardness (Rockwell, Vickers and Knoop scales)
- Metallography (including grain size, coating thickness, depth of hardening, etc)
- Chemical composition determination (XRF, FTIR and UV-Vis Spectrometry)
- Dimensional measurement
- Shadowgraphy
- Failure Analysis
- Microscopy (light, optical and Scanning Electron Microscopy)
- Weld analysis
- Coating thickness
- Corrosion testing (Neutral Salt Spray and Cyclic Corrosion Testin), testing lengths of up to 2.1m
- Usability testing
- Chemical reagents, etc



Metrology is the science of measurement. We can provide extensive metrology services on micro and macro samples. We use fully calibrated instruments and equipment traceable to the national standards to ensure that our clients receive the most accurate results possible.

Using out CCT (Cyclic Corrosion Test) chambers we can test small and large specimens ranging from structural framing systems to paints to automotive or aerospace components. We can provide cyclic corrosion tests to client's own specifications as well as NSS (Neutral Salt Spray Tests) to ASTM B117 and ISO 9227.



Our Universal Testing Machines use Class 0.2 and 0.5 load cells to provide high resolution through load ranges up to 250 kN as well as extremely accurate results. Our equipment is flexible and can also be used for dynamic fatigue testing of specimens.

# PLUS MUCH MORE...