

evolution

www.evofas.com

INSULATION FASTENERS GUIDE.

A Guide For Use With Our
IS, **T25IS** And **ERS** Fasteners

QUALITY ASSURANCE AND LABORATORY TESTING.

For more information on our extensive testing capabilities or if you wish to receive free training and continued professional development, please e-mail: technical@evofas.com.

WE BELIEVE IN FREE.

If you need technical support when considering, specifying or using our products then our expert team of structural, civil, mechanical and chemical engineers are on hand to assist and provide you with:

FREE TECHNICAL ADVICE
FREE AUTOCAD/REVIT DRAWINGS
AND MODELS
FREE CALCULATIONS AND MUCH MORE.

evolution
We have the solution.

Email: technical@evofas.com

Tel: +44 (0) 141 647 7100

More at: www.evofas.com



LABORATORY

OUR MOST SOUGHT AFTER SERVICES:

TENSILE, SHEAR, FATIGUE AND DEFLECTION TESTING

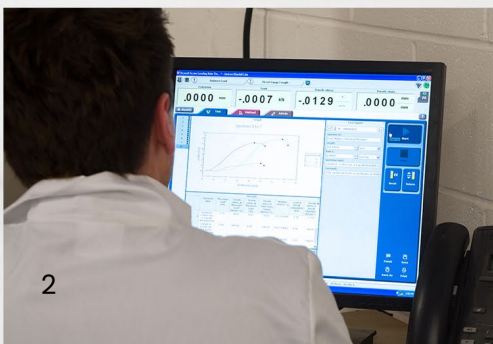
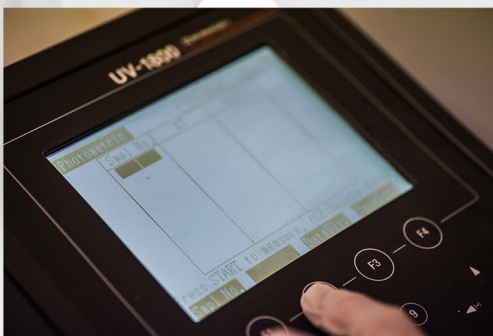
TORQUE TESTING

FAILURE ANALYSIS
(hydrogen embrittlement, stress corrosion etc)

METALOGRAPHY
(hardness - vickers/knoop/rockwell, Haz etc)

MICROSCOPY (light, metallographic etc)

CORROSION TESTING (neutral salt spray, cyclic corrosion etc)



INSULATION RETAINING WASHERS

FOR SECURING INSULATION TO TIMBER
AND SHEET STEEL WHEN USED WITH
EVOLUTION DRYWALL, IS etc



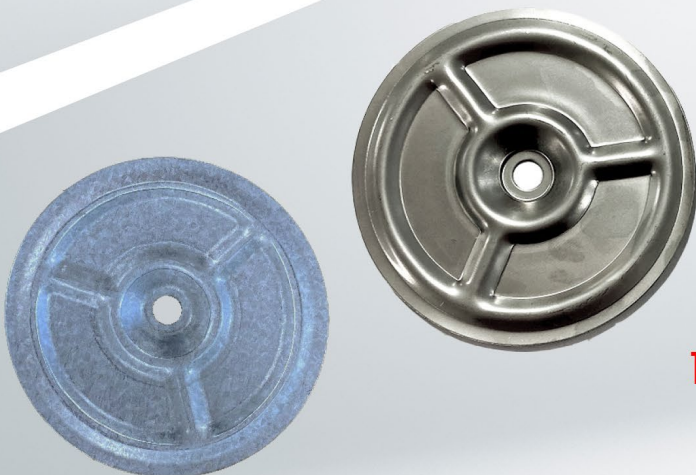
WARM ROOF DECK FIXING

FIXINGS TO ANCHOR DOWN INSULATION
FOR USE ON WARM ROOF DECK.
THESE FIXINGS REDUCE THE IMPACT FROM
HOT/COLD BRIDGING.



STRESS PLATES

SPREADING THE LOADING WHEN
FIXING MEMBRANE, INSULATION AND SINGLE PLY
MATERIALS IN ROOFING APPLICATIONS, PREVENTING
THE MATERIAL BEING FASTENED FROM PULLING OVER THE
HEAD OF THE FASTENER.



WARM ROOF AND DEEP INSULATION SYSTEMS

The great thicknesses of insulation used in commercial roofing require an innovative solution to meet the working lengths required.

The RW washer system provides additional length to the IS product range allowing all thicknesses of insulation to be retained. An additional benefit of the RW washer system is that it is telescoping and will not be affected by movement on the roof when maintenance and access is required.

RW WITH IS FASTENER

SELF DRILLING INSULATION

CODE	SIZE
IS60	4.8 x 60 mm
IS80	4.8 x 80 mm
IS100	4.8 x 100 mm
IS110	4.8 x 110 mm
IS120	4.8 x 120 mm
IS130	4.8 x 130 mm
IS140	4.8 x 140 mm
IS150	4.8 X 150 mm
IS160	4.8 x 160 mm
IS170	4.8 X 170 mm
IS180	4.8 X 180 mm
IS190	4.8 X 190 mm
IS200	4.8 X 200 mm
IS220	4.8 X 220 mm
IS240	4.8 X 240 mm
IS260	4.8 X 260 mm
IS280	4.8 X 280 mm
IS300	4.8 X 300 mm

SELF DRILLING INSULATION (TORX)

Available from the Netherlands

CODE	SIZE
T25IS90	4.8 x90mm
T25IS100	4.8 x100mm
T25IS120	4.8 x120mm
T25IS140	4.8 x140mm
T25IS160	4.8 x160mm
T25IS180	4.8 x180mm
T25IS200	4.8 x200mm
T25IS220	4.8 x220mm
T25IS240	4.8 x240mm

INSULATION RETAINING WASHER

CODE	SIZE	DIAMETER
RW5	5 mm Recess	46 mm
RW18	18 mm Recess	46 mm
RW65	65 mm Recess	50 mm
RW105	105 mm Recess	50 mm
RW165	165 mm Recess	50 mm

SOFFIT INSULATION RETENTION

The ERS fastener is ideal for retaining soffit insulation and lining boards to masonry and concrete substrates.

The aggressive buttress thread form ensures maximum resistance to wind loads is achieved.

The SPR90 stress plate offers a larger surface area to resist the pull-over of the soffit lining and boards under suction conditions.



SPR WITH ERS FASTENER

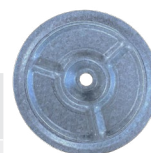
ERS

CODE	SIZE
ERS76	76 mm
ERS100	100 mm
ERS127	127 mm
ERS152	152 mm
ERS176	176 mm
ERS200	200 mm
ERS225	225 mm
ERS250	250 mm



STRESS PLATES

CODE	SIZE
SPR50	Round 50mm
SPR70	Round 70 mm
SPR90	Round 90 mm



* SPR CAN ALSO BE USED WITH IS AND T25IS RANGE.

FOR MORE INFO CONTACT US HERE:

sales@evofas.com
technical@evofas.com
T:0141 647 5100



GLASS AND MINERAL WOOL INSULATION SYSTEMS

When fire resistance is critical, our SSPR70 stress plate and A4IS fasteners are the ideal solution for the retention of glass and mineral wool panels, battens and mattresses.

The large surface area of the stress plate compresses the insulation and prevents significant movement of the insulation pile. In addition to its Class A1 fire classification and R60 fire resistance the all stainless steel construction of both the stress plate and fastener protects the integrity of the connection from vapour and condensation inside the wall or roof cavity. This system is backed by our industry leading warranty of up to 60 years.



SSSPR WITH A4IS FASTENER

A4 STAINLESS STEEL IS

CODE	SIZE
A4IS45	4.8 x 45 mm
A4IS60	4.8 x 60 mm
A4IS80	4.8 x 80 mm
A4IS100	4.8 x 100 mm
A4IS120	4.8 x 120 mm
A4IS140	4.8 x 140 mm
A4IS160	4.8 x 160 mm
A4IS180	4.8 x 180 mm
A4IS200	4.8 x 200 mm
A4IS240	4.8 x 240 mm

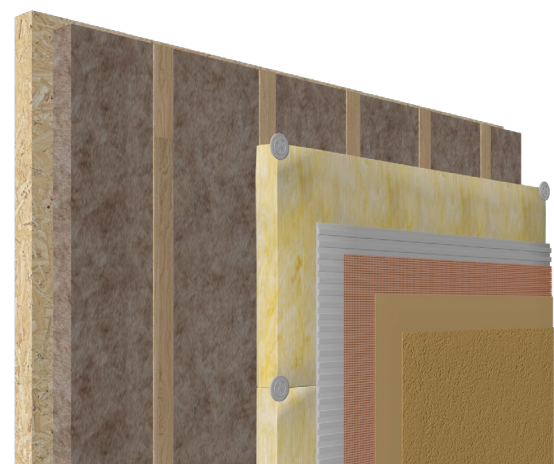
STAINLESS STEEL STRESS PLATES

CODE	SIZE
SSSPR70	Round 70 mm



FOR MORE INFO CONTACT US HERE:

sales@evofas.com
technical@evofas.com
T:0141 647 5100



EXTERNAL WALL INSULATION (EWI) SYSTEMS

The ideal combination of washer and fastener for residential EWI systems.

ECW60 provides an air gap over the screw heads, offering better u-values over standard washers.

ECW90 increases the surface area of the washer to prevent pull-over of the insulation due to wind loading. IS fasteners are designed for optimal withdrawal resistance in both light gauge Structural Framing Systems (SFS) and timber framing systems. The IS fastener can be interchanged with the A4IS variant for ultimate corrosion protection.



ECW60 AND ECW90 WITH IS FASTENER

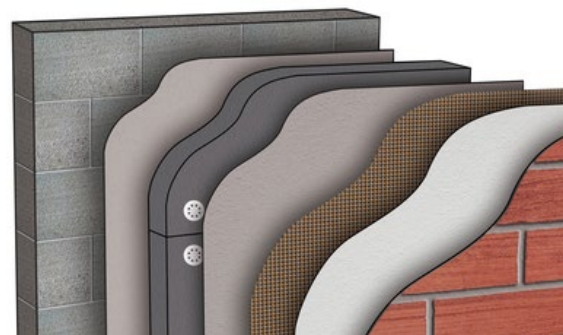
INSULATION RETAINING WASHER

CODE	SIZE	DIAMETER
ECW60	12 mm Recess	60 mm
ECW90	Fits ECW60	90 mm



FLAT WASHERS

CODE	SIZE	DIAMETER
EVNW35	35 mm nylon	35 mm
EVPPW50	50 mm polyprop	50 mm



FOR FURTHER INFORMATION, PLEASE DON'T HESITATE
TO CONTACT OUR TECHNICAL DEPARTMENT,
WHERE OUR IN-HOUSE ENGINEERS CAN GO
INTO FURTHER DETAIL WITH FREE HELP AND ADVICE:

technical@evofas.com

OR CALL

+44 (0) 141 647 7100

CHECK OUT OUR 2023 PRODUCT GUIDE
FOR MORE IN-DEPTH INFORMATION
ON ALL THE FASTENERS FEATURED IN THIS
DOCUMENT.



www.evofas.com
for latest product information,
offers and Evolution news



Sales and Customer Service
Tel: +44 (0) 141 647 7100
Fax: +44 (0) 141 647 5100
Email: sales@evofas.com



Administration and Accounts
Tel: +44 (0) 20 8905 2759
Fax: +44 (0) 20 8207 0044